



Soft Care® All Purpose

General purpose liquid hand wash

Description

Soft Care All Purpose is a liquid hand wash with fresh floral fragrance which provides a pleasant aroma for use in washrooms. Soft Care All Purpose contains an effective surfactant system which gently lifts dirt from skin. Soft Care All Purpose provides a solution for areas where an economic and pleasant to use hand wash is desired.

Key properties

- Floral fragrance
- Pink in colour
- pH-balanced
- Powerful surfactant system
- Biodegradable and ethically sourced
- Skin compatibility tested (Patch test)

Benefits

- Safe, quick and effective hand wash helps reduce the spread of germs
- Effective surfactant system ensures excellent removal of grease and other soils
- Wetting agents provide even application and an easy rinse
- Fresh scent and universal appeal make it especially suitable for use in public areas
- Reduced skin irritation and greater skin compatibility with a pH balanced formula.
- Optimal economy solution for everyday use

Use instructions

1. Apply this product to pre-wetted hands following the 6 steps process (see wall chart for details).
2. Rinse the hands to remove the entire product.
3. Dry the hands well to keep your skin healthy and maintain good hand hygiene.
Good hand hygiene takes 40-60 seconds.





Soft Care® All Purpose

Technical data

Appearance: Pink liquid

pH value (neat): 6.5

Form (in use): Liquid

The above data is typical of normal production and should not be taken as a specification.

Safe handling and storage information

Full guidance on the handling and disposal of this product is provided in a separate Safety Data Sheet; sds.diversey.com. Store in original closed containers away from extremes of temperature.

Available pack sizes

Soft Care All Purpose is available in 4x1.3L.



Soft Care®

Soft Care All Purpose Foam Mini Guide

Available in 1.3L cartridge



Use for cleaning:



Hands

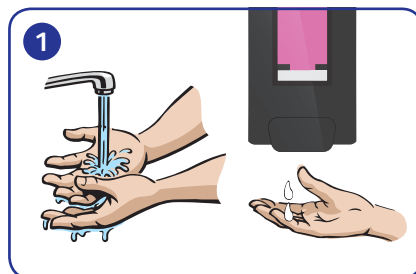


Ready to use
cartridge through an
IntelliCare dispenser



Perfumed

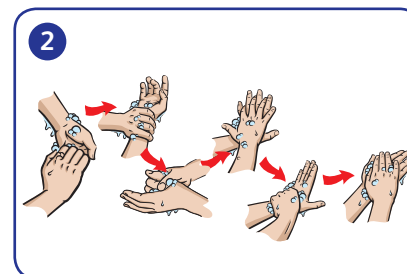
Application...



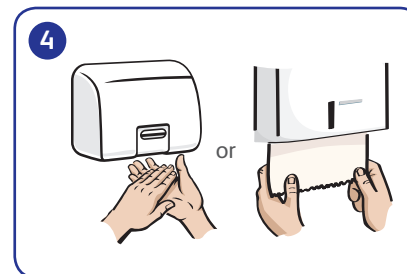
Wet hands with lukewarm water and apply one or two doses of product from dispenser.



Rinse well with water.



Rub to form a rich lather and wash for at least 60 seconds.



Dry hands thoroughly. Dry hands are crucial for maintaining good hand hygiene and for keeping skin in a good, healthy condition.

