

Tork Singlefold/C-fold Hand Towel Dispenser (White)



Article	553000
Material	Plastic
System	H3 - C-fold and ZZ-fold system
Height	439 mm
Width	333 mm
Depth	136 mm
Colour	White

The Tork Singlefold/C-fold Hand Towel Dispenser in Elevation Design is suitable for demanding environments. It reduces consumption and therefore waste with its reliable one-at-a-time dispensing. Elevation dispensers have a functional and modern design that makes a lasting impression on your guests.



www.tork.co.uk

- Bundles can be topped up easily to avoid paper run-outs
- The hood opens on the side for hassle-free maintenance
- A robust design with reliable dispensing gives you peace of mind

Shipping data			
	Consumer unit	Transport unit	Pallet
EAN	7322540349245	7322540349245	7322540371499
Pieces	1	1	72
Consumer units	-	1	72
Height	453 mm	453 mm	1962 mm
Width	149 mm	149 mm	800 mm
Length	340 mm	340 mm	1200 mm
Volume	22.9 dm3	22.9 dm3	1.7 m3
Net weight	1409 g	1.4 kg	101.45 kg
Gross weight	1708 g	1.7 kg	122.98 kg
Packing material	Corrugated board	Corrugated board	-

Choose a refill that suits you

- Tork Singlefold Hand Towel Universal

290158
- Tork Green Singlefold Hand Towel Universal

290135
- Tork Extra Soft Singlefold Hand Towel Premium

100278

Alternative products



Contact

SCA Hygiene Products UK Ltd
Southfields Road
Dunstable
Bedfordshire
LU6 3EJ
customer.servicesafh@sca.com
Tel 01582 677570
Fax 01582 677580

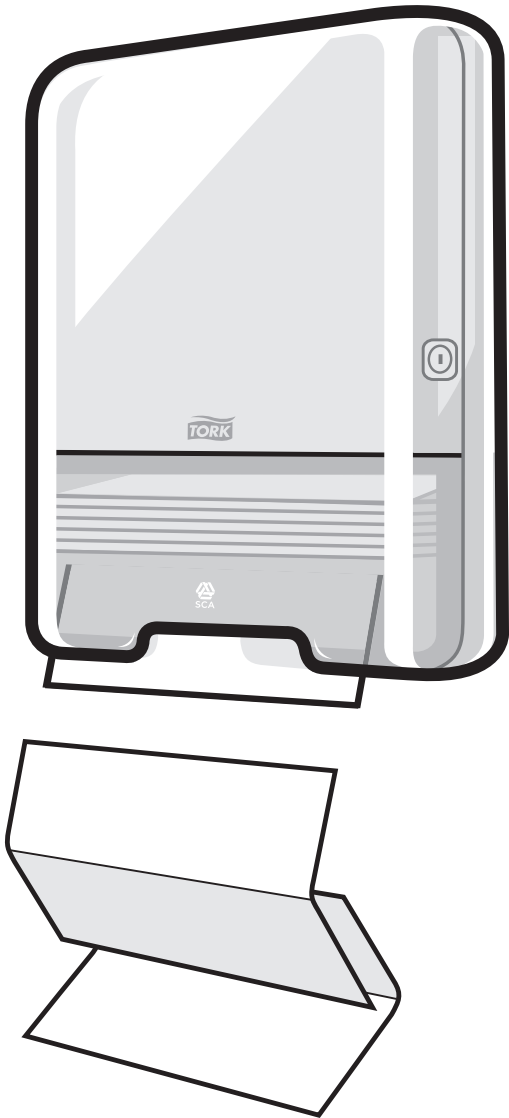
Tork is a brand of SCA. SCA is a leading global hygiene and forest products company that offers personal care, tissue and forest products in about 100 countries. SCA is considered a benchmark in sustainability. For more information, visit www.sca.com/uk



European Community Design Registration RCD 000929971



Elevation
Design

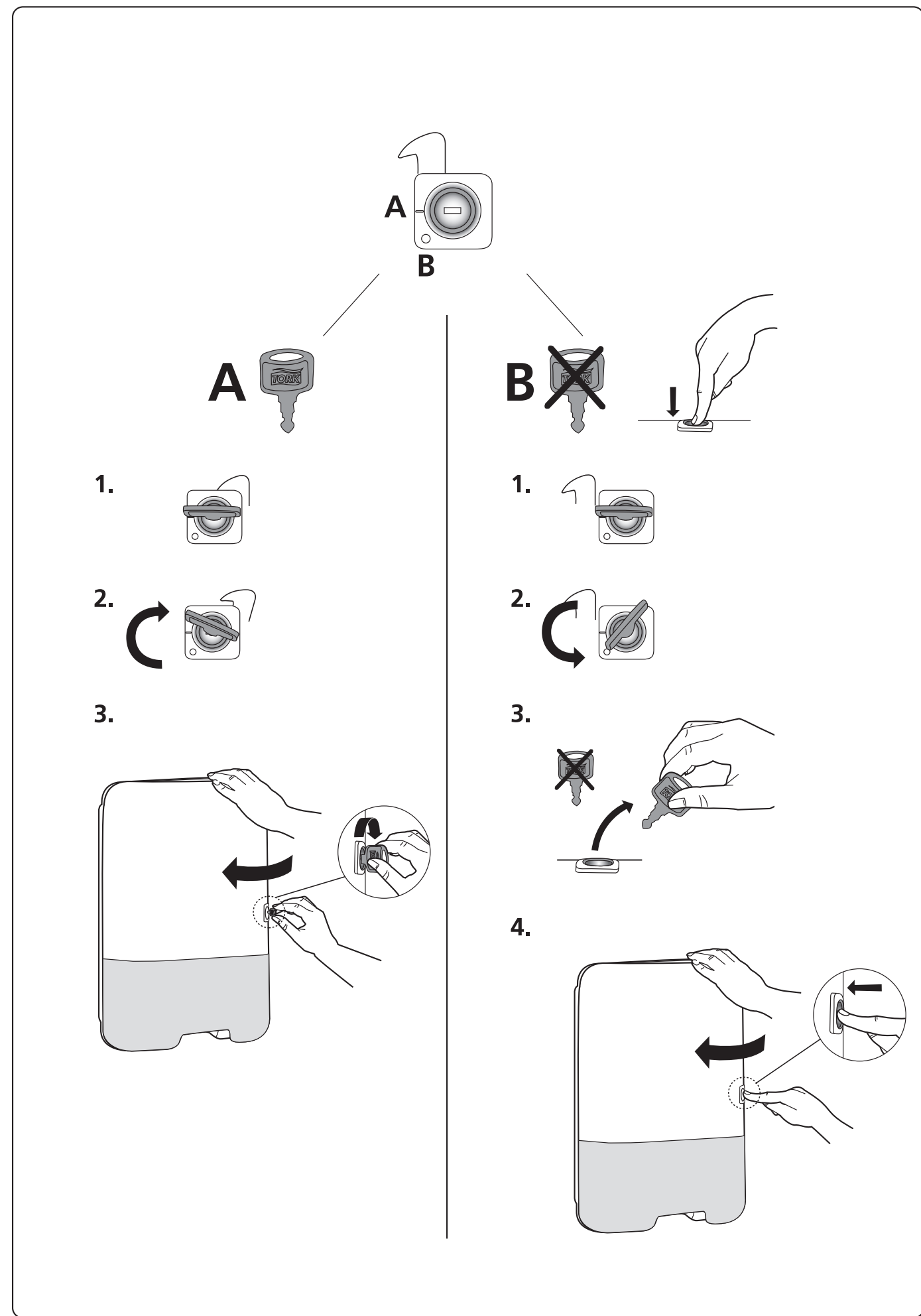
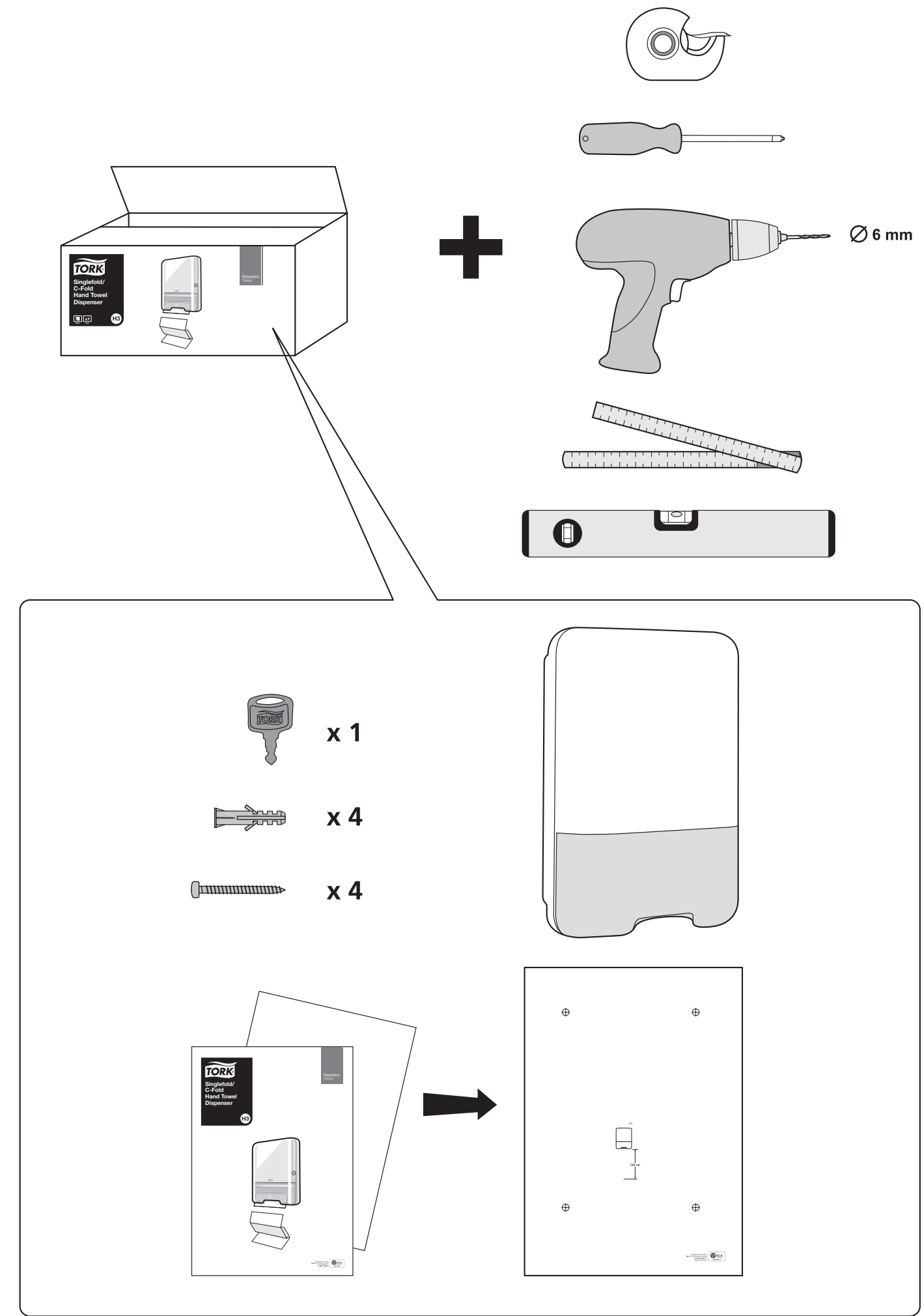


Manufactured by SCA,
SE-405 03 Göteborg, Sweden
www.sca-tork.com
Made in Germany

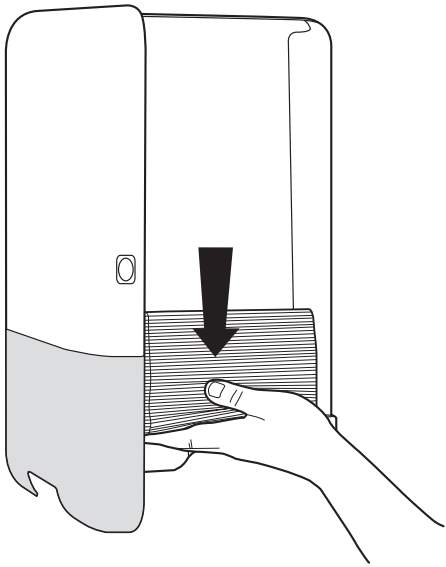
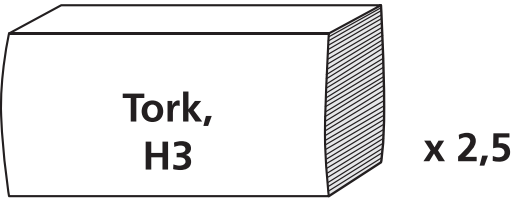


Manufactured by SCA,
SE-405 03 Göteborg, Sweden
www.sca-tork.com
Made in Germany

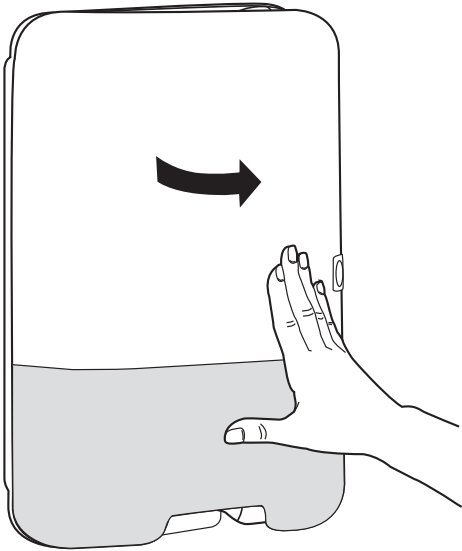




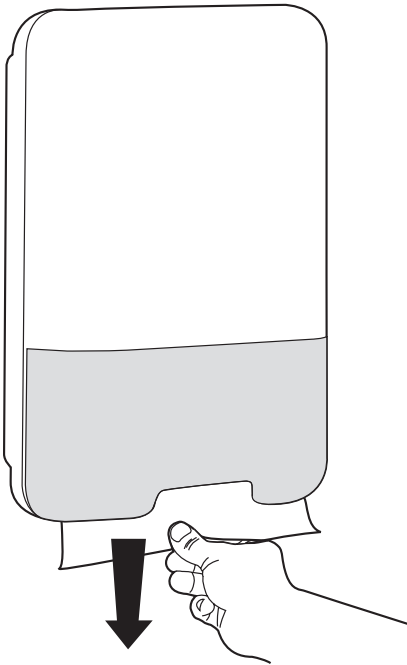
2.



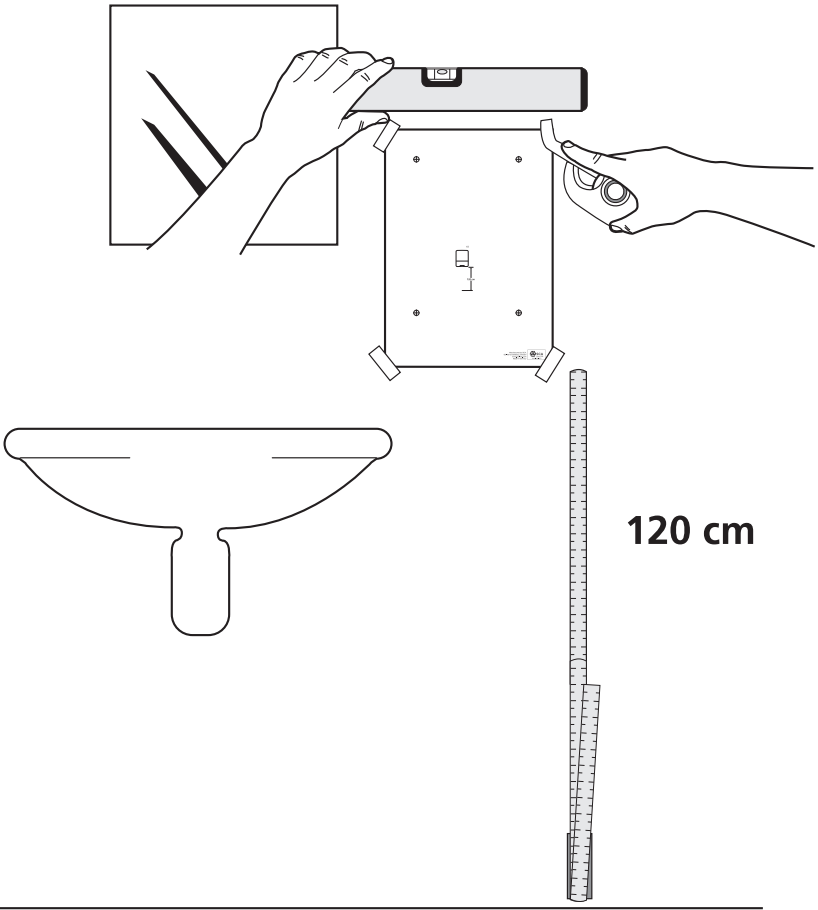
3.



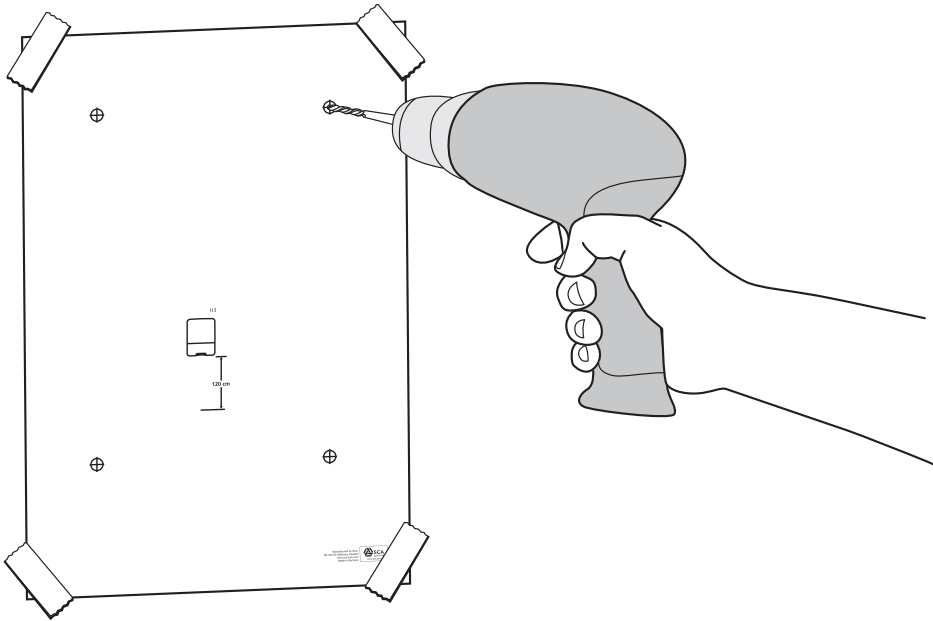
4.



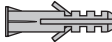

1.

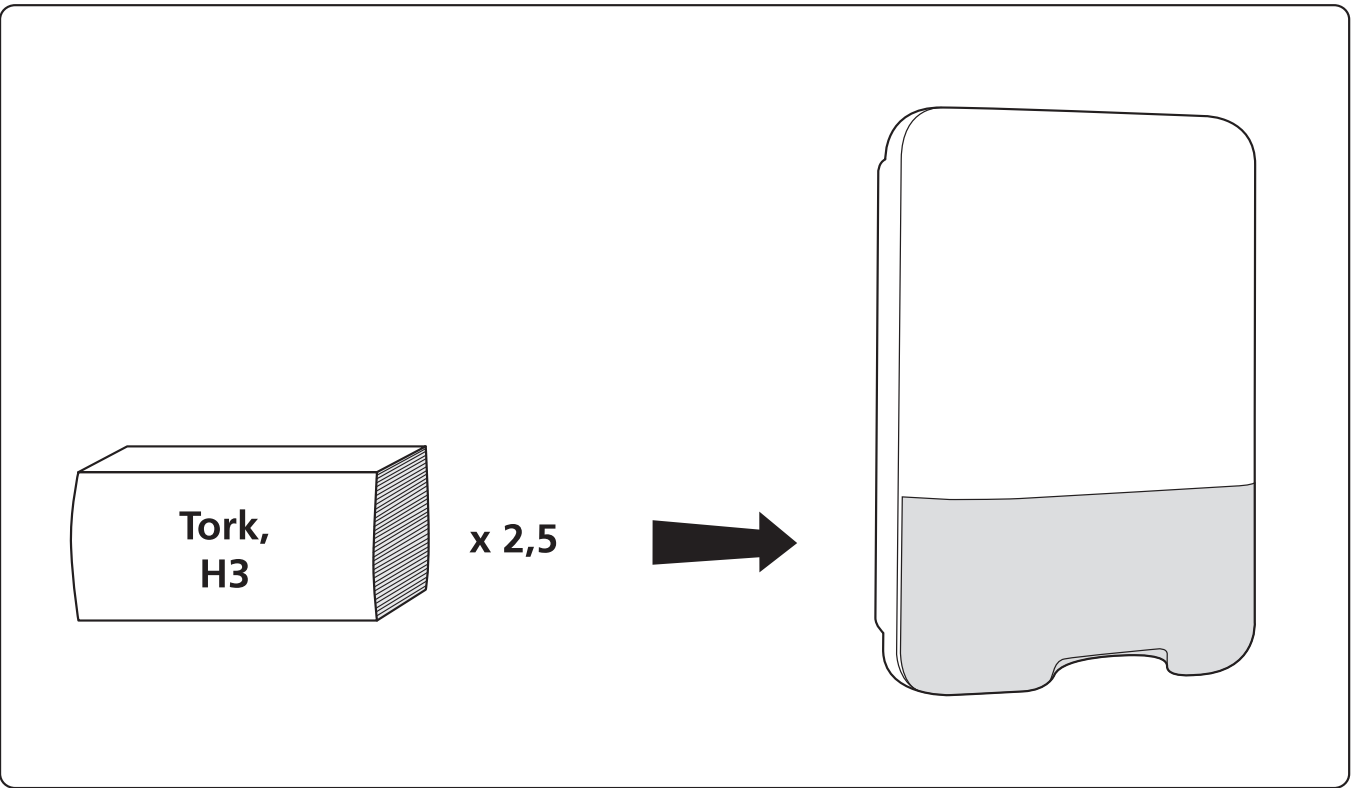
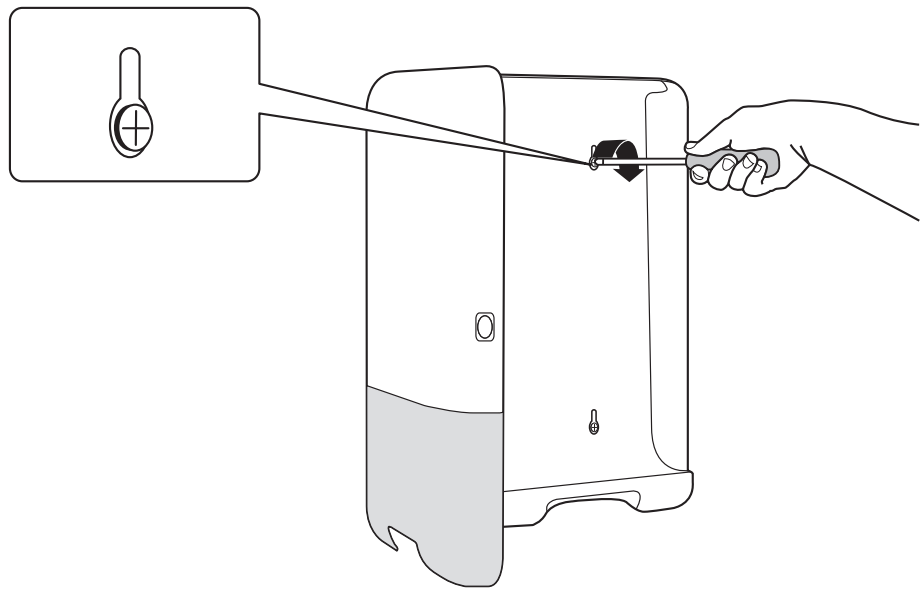


2.

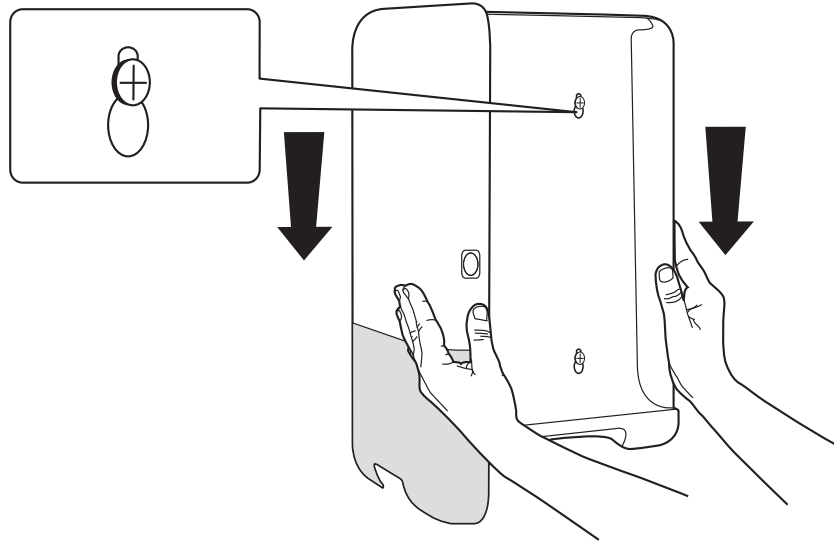


3.

-  x 4
-  x 4



4.



1.

